



Scouting AT HOME Badgework



BEAVERS



Skills Challenge

cubs



Skills Challenge



Mini Easter egg box

You will need...

- Thin plain or coloured card (on old cereal box will do)
- A pair of scissors or a craft knife
- Glue or Pritt sick
- Ruler or straight edge to aid folding
- Felt-tipped pens or coloured pencils
- Templates on pages 2 & 3



Put it together...

- Print both templates and cut them out
- Stick template A on to thin card. If you want a plain box you may wish to use card with a decorative colour backing. If you would like a decorated box, glue template A on to plain card and then glue template B on to the reverse
- Cut around the edges of your template once again
- If using template B, colour in the picture
- Fold along the dotted lines and the indicated tab edges
- Glue tab A on to panel A
- You may choose at this point to place some small Easter eggs in your half completed container
- Glue tab B on to panel B
- To close the box, tuck tab C under panel C



Fairly
clean



Not too
messy



Quite
messy

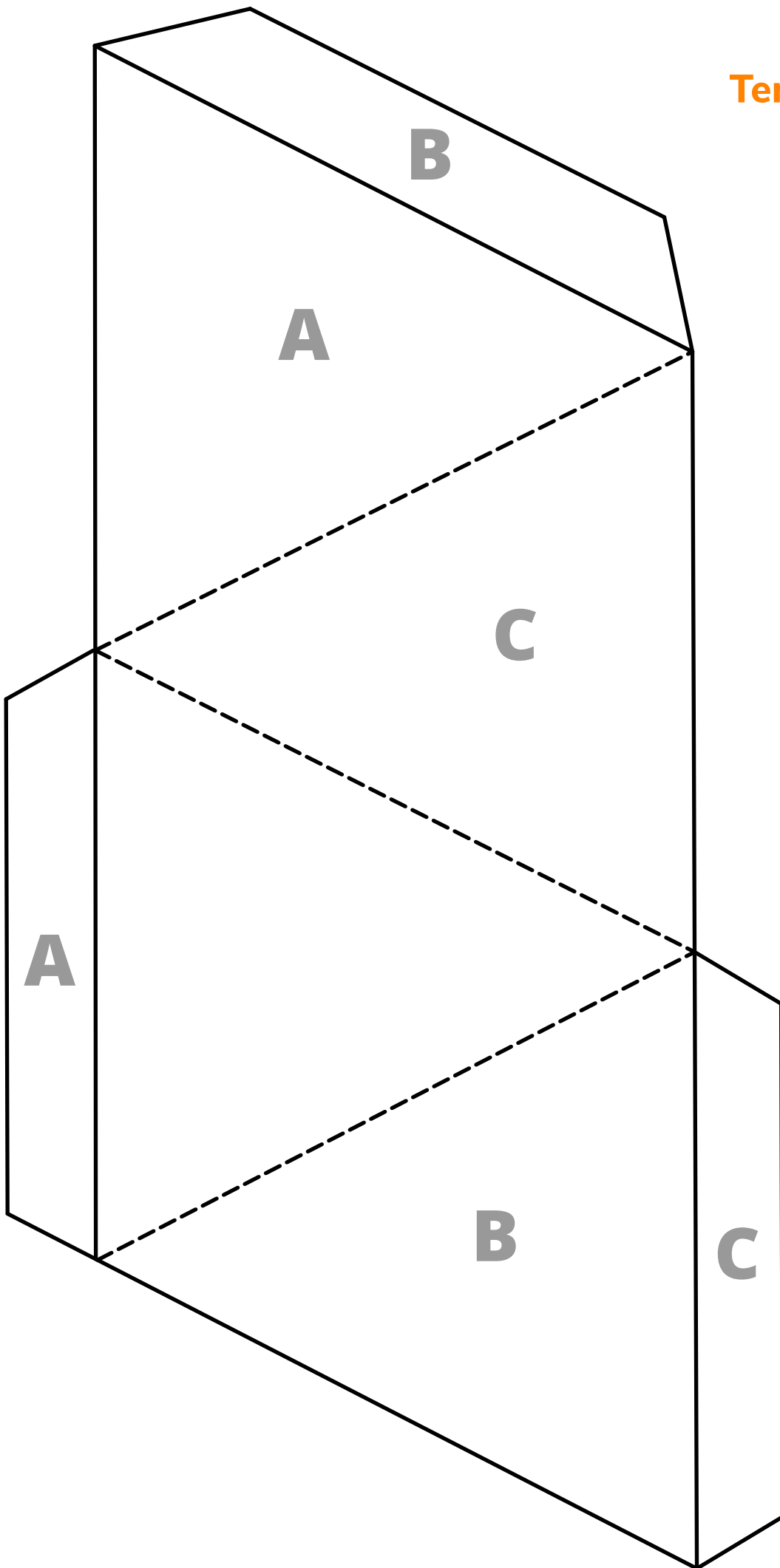


Highly
messy

Original source:

- Scouting April 2000
- Author - Brendan Boucher
- © Scouter Bill @ Wedmore

Template A



Template B

